

PrepPDF

Pass Your Next Certification Exam Fast!

Everything you need to prepare, learn & pass your certification exam easily.

365 days free updates. First attempt guaranteed success.

Choose the version that fits your needs	PDF Version	Desktop Test Engine	Online Test Engine
Latest and Up-to-Date exam dumps with real exam questions answers.	✓	✓	✓
Get 12-Months free updates without any extra charges.	✓	✓	✓
Experience same exam environment before appearing in the certification exam.	✗	✓	✓
100% exam passing guarantee in the first attempt.	✓	✓	✓
20% discount on more than one license and 30% discount on 5+ license purchases.	✗	✓	✓
100% secure purchase on SSL.	✓	✓	✓
Completely private purchase without sharing your personal info with anyone.	✓	✓	✓

<http://www.preppdf.com>

Reasonable study tool and effective study materials - PrepPDF

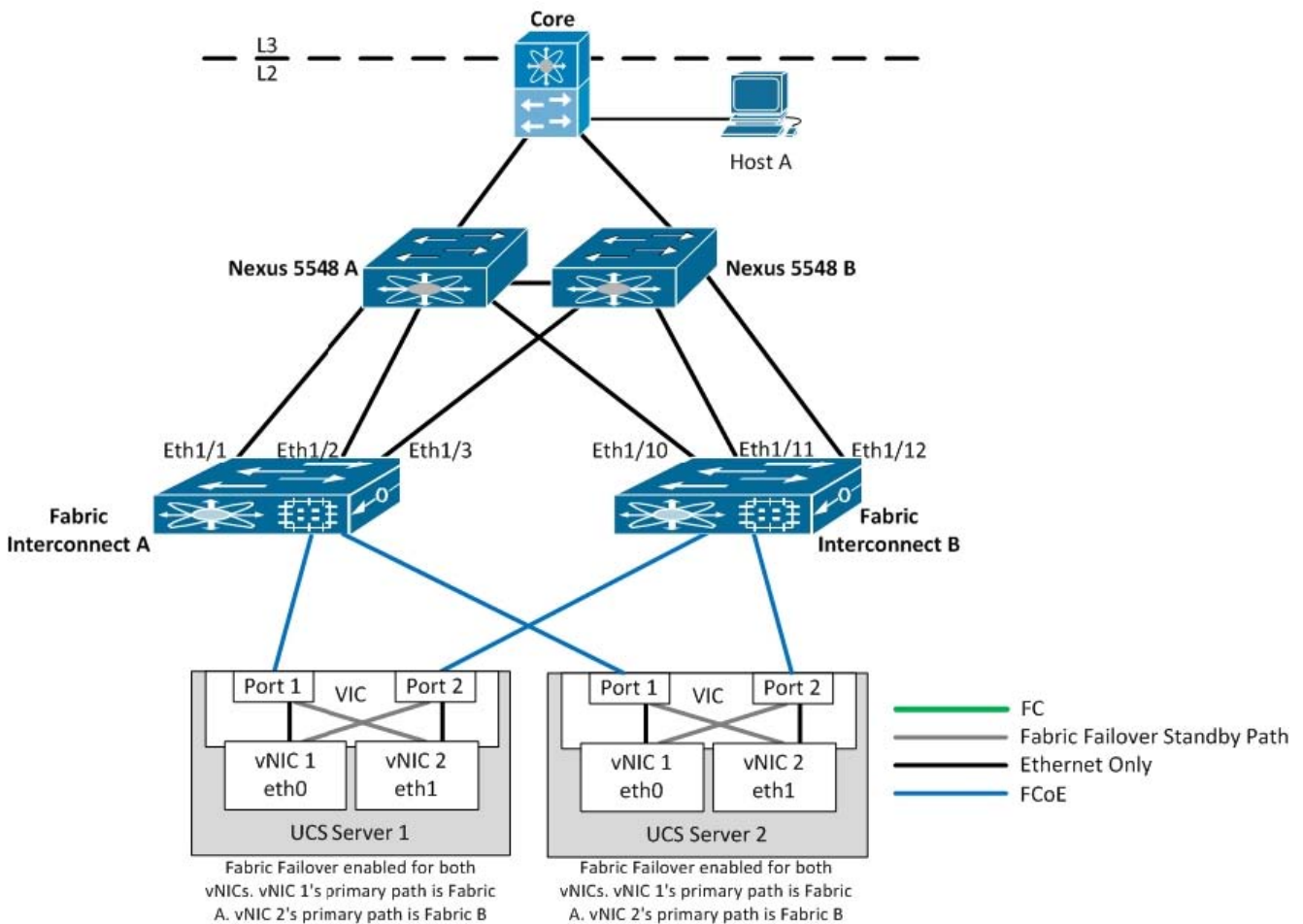
Exam : **350-080**

Title : CCIE Data Center Written Exam

Vendor : Cisco

Version : DEMO

NO.1 Refer to the exhibit.



All Ethernet ports are trunked with VLANs 2 thru 10. The Cisco UCS domain is in end-host mode. Host A transmits a single broadcast frame on VLAN 4.

Which statements are true? (Choose two.)

- A. Nexus 5548 A and Nexus 5548 B send a copy of the broadcast frame down all six ports to Fabric Interconnect A and Fabric Interconnect B.
- B. The deja vu mechanism on the fabric interconnects prevents the fabric interconnects from receiving multiple copies of the broadcast frame.
- C. All four vNICs receive a single copy of the broadcast frame.
- D. All four vNICs receive multiple copies of the broadcast frame on VLAN 4 but no broadcasts on any other VLAN.
- E. The spanning tree process prevents the vNICs from receiving multiple copies of the broadcast frame.
- F. The Reverse Path Forwarding mechanism prevents the vNICs from receiving multiple copies of the broadcast frame.

Answer: A,C

NO.2 Cisco FabricPath switches support ECMP forwarding for known unicast frames. If the destination switch ID can be reached through more than one output interface with equal cost, the forwarding engine uses a hash function to pick one of the interfaces. Which three options are valid for hash input for unicast frames? (Choose three.)

- A. Use only the source parameters (layer-3, layer-4, or mixed).
- B. Use the FabricPath switch ID in the FabricPath header.
- C. Use only the destination parameters (layer-3, layer-4, or mixed).
- D. Use both the source and the destination parameters (layer-3, layer-4, or mixed).
- E. Include only Layer 2 input (source or destination MAC address).

Answer: A,C,D

NO.3 What is the difference between the Ethalyzer and the SPAN feature in Cisco NX-OS?

- A. The Ethalyzer captures control-plane traffic, while SPAN captures all traffic.
- B. The Ethalyzer captures all traffic including control-plane traffic, while SPAN captures only the control-plane traffic.
- C. The Ethalyzer captures only data traffic, while SPAN captures all traffic.
- D. The Ethalyzer captures only control traffic, while SPAN captures data traffic.

Answer: A

NO.4 Refer to exhibit.

```

# show feature
scpServer      1      enabled
sshServer      1      enabled
tacacs         1      enabled
telnetServer   1      enabled
udd            1      enabled
vpc            1      enabled
vrrp           1      enabled
vip            1      enabled

#show run ipqos
---output omitted---
policy-map type network-qos JUMBO
class type network-qos class-foe
  pause no-drop
  mtu 2158
class type network-qos class-default
  mtu 9216
---output omitted---
service-policy type network-qos JUMBO

Switch# show interface e1/1 | i MTU
MTU 1500 bytes, BW 10000000 Kbit, DLY 10 usec
Switch# show interface e1/2 | i MTU
MTU 1500 bytes, BW 10000000 Kbit, DLY 10 usec

```

Which option describes what happens to a packet with an MTU of 2158 when it is switched from E1/1 to E1/2?

- A. It is punted to the CPU.
- B. It is dropped.
- C. It is fragmented.
- D. It is forwarded with no fragmentation.

Answer: D

NO.5 A load balancer performs an operation on a predefined parameter, such as the IP address, HTTP cookie, or URL, when a new connection is made so that another connection with the same parameter will always reach the same server. Which load-balancing predictor does this statement describe?

- A. round robin
- B. least-connections

- C. hashing
- D. least-loaded

Answer: C

NO.6 DRAG DROP

Drag and drop the correct port security configuration on the left to the correct action on the right.

ShutDown
Errdisable
Restrict
Protect

Shuts down the interface that received the packet triggering the violation.
The address that triggered the security violation is learned, but any traffic from the address is dropped.
Configure the device to re-enable the interface automatically if a shutdown occurs.
Drops ingress traffic from any nonsecure MAC addresses. The device keeps a count of the number of dropped packets.

Answer:

ShutDown
Errdisable
Restrict
Protect

ShutDown
Protect
Errdisable
Restrict

Explanation:

Shut Down Protect Errdisable Restrict

<http://www.cisco.com/c/dam/en/us/td/i/templates/blank.gif>Shutdown-Shuts down the interface that received the packet triggering the violation. The interface is error disabled. This action is the default. After you reenable the interface, it retains its port security configuration, including its secure MAC addresses. You can use the errdisable global configuration command to configure the device to reenable the interface automatically if a shutdown occurs, or you can manually reenable the interface by entering the shutdown and no shut down interface configuration commands.

<http://www.cisco.com/c/dam/en/us/td/i/templates/blank.gif>Restrict-Drops ingress traffic from any nonsecure MAC addresses. The device keeps a count of the number of dropped packets.

<http://www.cisco.com/c/dam/en/us/td/i/templates/blank.gif>Protect-Prevents violations from occurring. Address learning continues until the maximum number of MAC addresses on the interface is reached, after which the device disables learning on the interface and drops all ingress traffic from nonsecure MAC addresses.

NO.7 Which mechanism do the CNA and the Cisco Nexus 5000 Series Switches use to provide a lossless class of Ethernet traffic?

- A. LLDP
- B. LACP
- C. PFC

D. FIP

Answer: C

NO.8 Refer to the exhibit.

```

iscsi virtual-target name iqn.1987-02.com.cisco.t1
  pWWN 28:00:01:02:03:04:05:06 fc-lun 0x0000 iscsi-lun 0x0000
iscsi virtual-target name iqn.1987-02.com.cisco.t2
  pWWN 28:00:01:02:03:04:05:06 fc-lun 0x0001 iscsi-lun 0x0000
iscsi virtual-target name iqn.1987-02.com.cisco.t3
  pWWN 28:00:01:02:03:04:05:06 fc-lun 0x0002 iscsi-lun 0x0000
  pWWN 28:00:01:02:03:04:05:06 fc-lun 0x0004 iscsi-lun 0x0001
    
```

Based on above MDS iSCSI configuration, which two statements are true? (Choose two.)

- A. The iSCSI initiator at name iqn.1987-02.com.cisco.t2 has access to only one LUN
- B. The iSCSI initiator and iSCSI target iqn.1987-02.com.cisco.t3 must be in the same zone before LUNS are available to host.
- C. The iSCSI initiator that connects to target name iqn.1987-02.com.cisco.t3 will see two LUNS numbered as 2 and 4.
- D. The iSCSI initiator that connects to target name iqn.1987-02.com.cisco.t3 will see two LUNS as numbers 0 & 4.
- E. The FC lun 0x0000 mapping to iscsi-lun 0x0000 is not permitted.

Answer: B,C

NO.9 Which statement describes the below output from an MDS switch?

```

Flow ID: 44 Initiator VSAN: 200 Initiator WWN: 50:06:04:8a: cc: 19:12: db Target VSAN: 200 Target
WWN: 50:06:04:8c: de: ad: be: ef Target LUN: ALL LUNs
    
```

Initiator Verification Status: success

Target Verification Status: WWN was not found in name server

Initiator Linecard Status: success

Target Linecard Status: Status not yet checked

Feature Status:

Acceleration enabled Write-Acceleration Buffers: 1024 Configuration Status: flow verification failed

- A. The zone containing both the initiator and target does not exist
- B. The zone set has not been activated
- C. The target is not logged into the fabric
- D. The pWWN used for the target is invalid

Answer: C

NO.10 Which two statements about VACLs on Cisco Nexus 7000 Series Switches are true? (Choose two.)

- A. VACLs make use of IP or MAC ACLs.
- B. A single VACL can be shared across two or more VDCs.
- C. Only options drop and forward are permitted.
- D. Use of VACLs requires no special license to be installed.

Answer: A,D

NO.11 Application Control Engine (ACE) can check the health of servers and server farms by configuring health probes (which are sometimes referred to as keepalives). A probe can be one of many types. Which are valid ACE probes? (Choose three.)

- A. HTTP
- B. Java scripting
- C. TCL scripting
- D. RADIUS
- E. TACACS

Answer: A,C,D

NO.12 In a Cisco Unified Computing System, where are SAN port channels connected to?

- A. Only to Cisco Fibre Channel switches
- B. Only to Cisco Fibre Channel switches in NPIV mode
- C. To any Fibre Channel switch
- D. Directly to storage arrays
- E. Only to Nexus Switches

Answer: A

NO.13 What is the use of NPV in Cisco Unified Computing Systems? (Choose two.)

- A. Compatibility with third-party Fibre Channel switches
- B. Faster throughput
- C. Reduce domain IDs in a Fibre Channel environment
- D. Support for increased number of VSANs
- E. Support for SAN port channels

Answer: A,C

NO.14 A customer would like to monitor traffic that is being sent to a specific virtual machine named VM001 using SPAN. The customer has another virtual machine configured as a sniffer host called VM002. What configuration is required, and what other changes will need to be made? (Choose two.)

```
VSM-PRI-188# 71thern vethernet 5 Vethernet5 is up Port description is VM001, Network Adapter 2
HardwarE. Virtual, address: 0050.56b0.001e (bia 0050.56b0.001e) Owner is VM "VM001", adapter is
Network Adapter 2 Active on module 5 VMware DVS port 484 Port-Profile is VM-vlan-10
Port mode is access
VSM-PRI-188# 71thern vethernet 6
Vethernet6 is up
Port description is VM002, Network Adapter 1
```

Hardware. Virtual, address: 0050.56b0.0020 (bia 0050.56b0.0020)

Owner is VM "VM002", adapter is Network Adapter 1

Active on module 5

Vmware DVS port 485

Port-Profile is VM-vlan-10

Port mode is access

A. Monitor session 1 type span Source interface veth5 both Destination interface veth6 No shut

B. monitor session 1 source vlan 10 destination interface veth6 no shut

C. monitor session 1 type er-span source interface vlan 10 destination ip 10.1.1.10 no shut

D. VM002 must be removed from the Nk1V

E. Move VM002 to Module 5

F. Restart the VEM on module 5

Answer: A,E

NO.15 In DCBX feature negotiation, the switch and CNA exchange capability information and configuration values. Which three capabilities are supported in Cisco Nexus 5000 Series Switches? (Choose three.)

A. PFC

B. support for logical link up or down

C. FCoE

D. multicast

E. speed

F. duplex

Answer: A,B,C

NO.16 Which four options describe benefits of the global load-balancing solution? (Choose four.)

A. device status within the data center

B. performance granularity

C. centralized client access

D. intelligent traffic management

E. reacts quickly for availability only

F. server monitoring statistics

G. round robin support only for load-balancing

Answer: A,B,D,F